

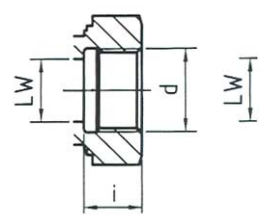
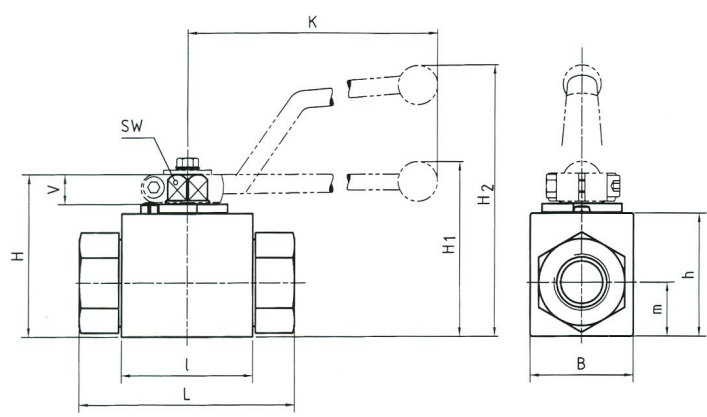
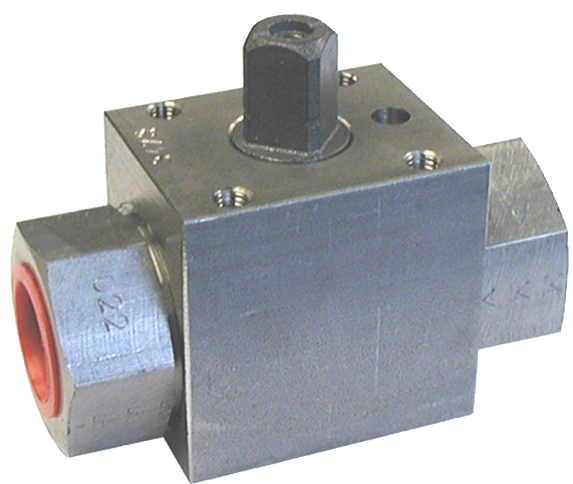


**Weyn-Lauwers** N.V.

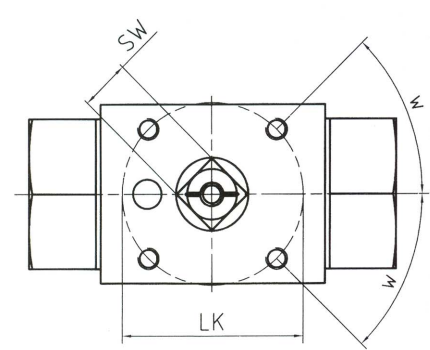
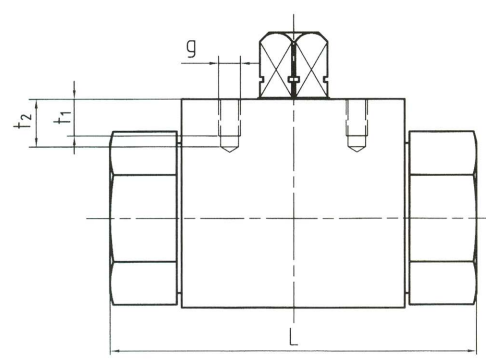
Industriepark-Noord 12  
B - 9100 SINT-NIKLAAS

Tel. : 00 32 (0)3 776.34.13  
Fax : 00 32 (0)3 778.09.52  
weynlauwers@weynlauwers.be  
www.weynlauwers.be

**HIGH PRESSURE  
BALL VALVE  
SS316  
fig 179 Ex**



DIN ISO 228



**DESIGN FEATURES**

REF. : BKH-Gxx-44aB-Ex II 2 G c  
2-way ball valves with assembling holes  
delivered without handle  
acc. to ATEX directive 94/9, EX II 2G c

1/8"	1/4"	3/8"	1/2"	3/4"	1"	5/4"	6/4"
PN500	PN500	PN500	PN500	PN315	PN315	PN315	PN250

**MATERIALS**

body stainless steel 1.4571  
ball stainless steel 1.4571, hard-chrome plated  
stem stainless steel 1.4571  
ball seats PEEK with inner protection ring against erosion for increase of lifetime  
O-rings FPM  
max. temp. -30°C / +100°C

d	DN	LW	L	I	B	H	h	m	V	SW	i	d	H1	H2	LK	g	t1	t2	ISO	kg
1/8"	4	5	69	40	26	47	33	13,5	11	9	115	10		82	36	M5	6	7,5	F03	0,31
1/4"	6	6	69	40	26	47	33	13,5	11	9	115	14		82	36	M5	6	7,5	F03	0,30
3/8"	10	10	72	43	32	52	38	17,5	11	9	115	14		86	36	M5	7	9	F03	0,44
1/2"	13	13	83	48	35	54	40	19	11	9	115	16,3		89	36	M5	6	8	F03	0,55
3/4"	20	20	95	62	47	75	57	24,5	14	14	200	18	79		50	M6	10	14	F05	1,27
1"	25	25	113	66	58	83	65	29,5	14	14	200	20	87		50	M6	10	12	F05	1,97
5/4"	32	25	120	66	58	83	65	29,5	14	14	200	22	87		50	M6	10	12	F05	2,10
6/4"	40	25	130	66	58	83	65	29,5	14	14	200	24	87		50	M6	10	12	F05	2,40